



HOSPITAL GRADE

GFCI Receptacles

The hospital grade GFR series is built specifically to withstand the rigors of hospital environments. These ground fault receptacles feature innovative design and superior materials.

Patented Autoguard® self-test technology includes exclusive Closed Loop Active Detection (CLAD). Our advanced microcontroller identifies and isolates true ground fault conditions from transient events, harmonics, and other anomalous building noise.

Tamper-resistant/weather-resistant listed GFR models include our patented tamper-resistant (TR) shutters.

Available in standard terminal and SNAPConnect® compatible versions.

Use hospital grade GFR receptacles for wet location applications throughout hospitals and medical facilities.

- Single LED indicator—power (green), trip ground fault (red), and end of life (flashing red)
- Patented Autoguard® self-test and power denial technology
- Fed Spec UL Listed hospital grade

HOSPITAL GRADE

GFCI Receptacles

ORDERING INFORMATION

Description	Colour	15A	20A
SnapConnect™ hospital grade ground fault receptacle, tamper and weather resistant	Ivory Red White	SNAPGFTW82I SNAPGFTW82R SNAPGFTW82W	SNAPGFTW83I SNAPGFTW83R SNAPGFTW83W
SnapConnect™ hospital grade ground fault receptacle	Ivory Red White	SNAPGF82I SNAPGF82R SNAPGF82W	SNAPGF83I SNAPGF83R SNAPGF83W
Hospital grade ground fault receptacle, tamper and weather resistant	Ivory Red White	GFRTW82I GFRTW82R GFRTW82W	GFRTW83I GFRTW83R GFRTW83W
Hospital grade ground fault receptacle	Ivory Red White	GFR82I GFR82R GFR82W	GFR83I GFR83R GFR83W

Additional colors available, please visit our website or contact your Hubbell representative.



TECHNICAL INFORMATION

Ratings

Amperage	15 Amp/20 Amp
Feed-through	20 Amp Protection
Voltage	120V AC (- 15%, + 10%)
Frequency	60 Hz
Dielectric	Withstand 1,500V
Flammability	V2 per UL 94
Operating Temp	(-35°C to 66°C)
Trip Level	(4mA to 6mA) .025 sec.
Short Circuit	10,000 Amps

Certifications

UL Listing	E41978 Fed Spec
UL Std 498	Receptacle
UL Std 943	GFCI
UL Std 943	Dust Resistant
UL Std 943	Corrosion Resistant
NEC®/CEC®	TR, WR Resistant
CSA Listing	LR24886
CSA Std	C22.2 No. 42
CSA Tech	No. M-02A

Construction

Termination	Back and Side
Terminal	#14 to # 10AWG
Grounding	Autoground Staple
Power Indicator	Solid Green
GF/Trip Indicator	Solid Red
End of Life	Flashing Red
Contacts/Bridge	Brass
Printed Circuit Board	Selective Coating
Scored Bridge	OEM Installations

Code and Standard Compliance

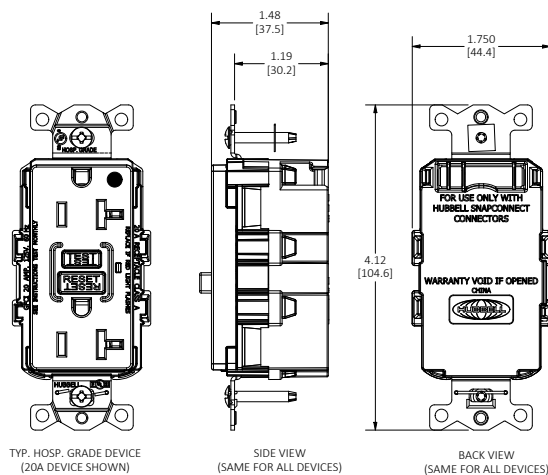
National Electric Code®

Compliant with NEC® 406.12 and NEC® 517-18c for Tamper-Resistance
Compliant with NEC® 406.9 for Weather Resistance

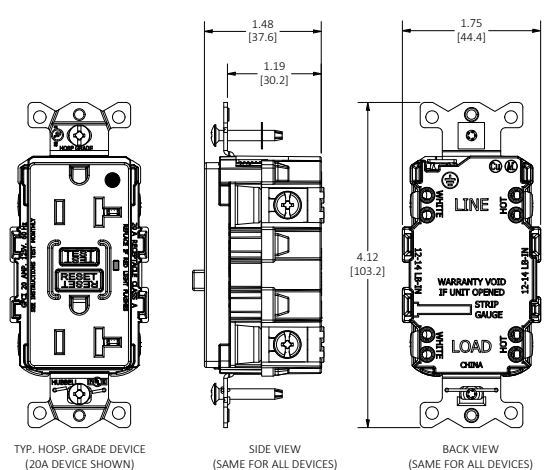
Industry Standards

NEMA WD6, ANSI C-73, NOM, National Electric Code, Canadian Electric Code

SNAPCONNECT® DEVICES



STANDARD DEVICES



www.hubbell.ca

